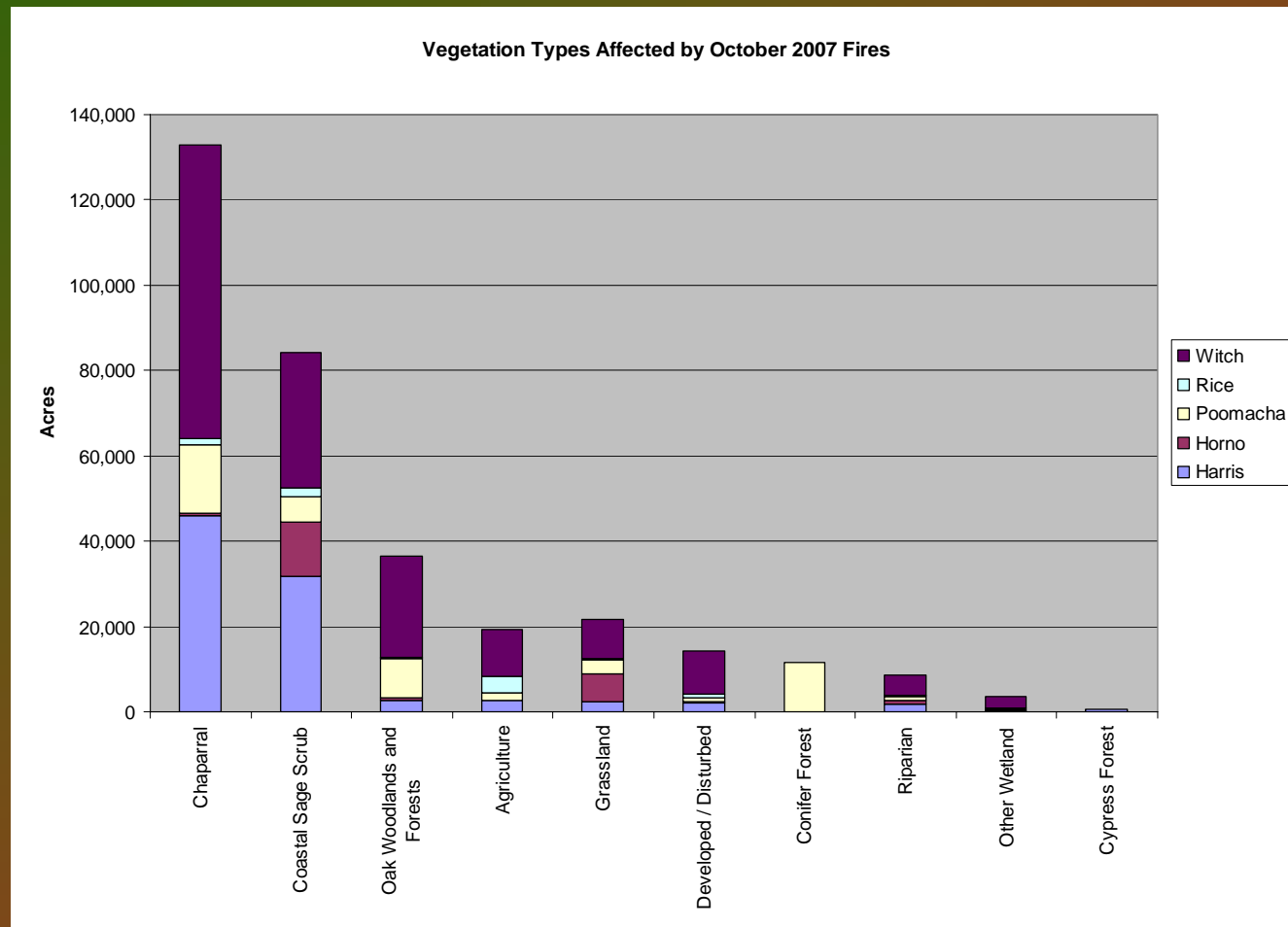


Fire History in San Diego County

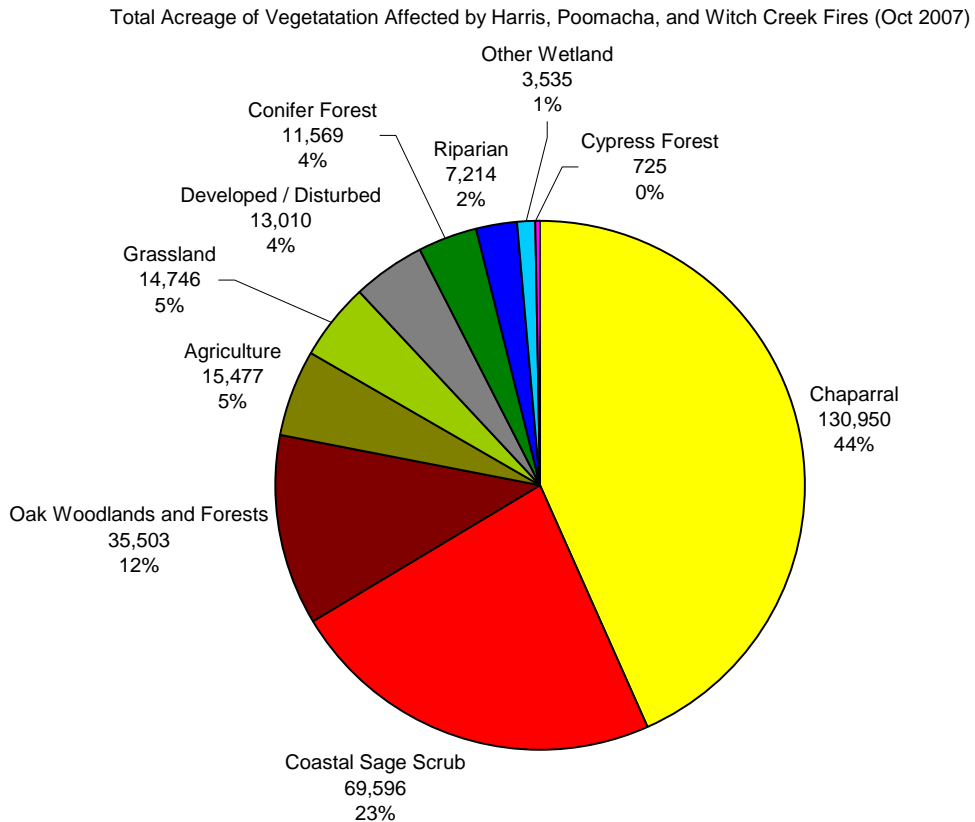
2007 Fires in a Historical Context

J. Jeremy Buegge, County of San Diego

2007 Fires – Acres Burned



2007 Fires - Vegetation



2007 Fires – County Lands

- Blue Sky Reserve (County owned property)
- Del Dios Highlands Preserve
- Hellhole Canyon Preserve
- Hollenbeck Canyon (County owned property)
- Lusardi Creek Preserve
- Mason Wildlife Preserve
- Mount Gower
- Potrero Park
- Santa Ysabel Open Space Preserve (Western Property)
- Simon Park

2007 Fires – Return Fires

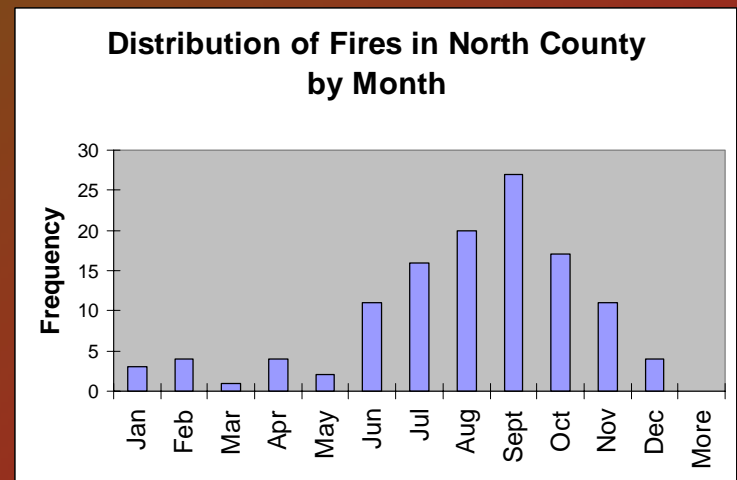
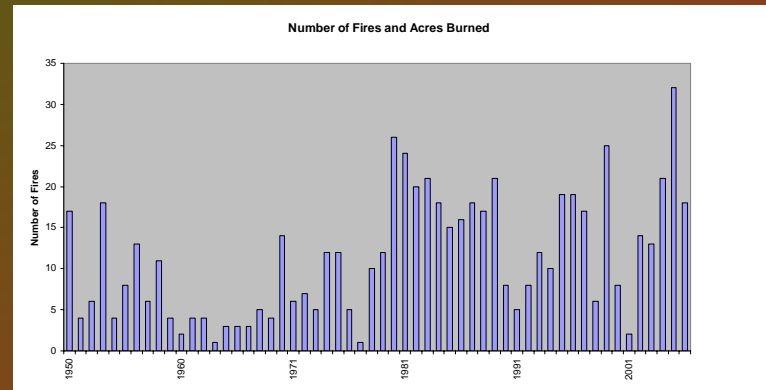
		2003 Fires		
		Cedar Fire (270,685 acres)	Paradise Fire (56,545 acres)	Otay Fire (44,734 acres)
2007 Fires	Harris Fire (90,700 acres)	--	--	25,500 ac (57%)
	Witch Creek Fire (162,100 acres)	39,700 ac (15%)	14,500 ac (26%)	--
	Poomacha Fire (49,500 acres)	--	15,100 ac (27%)	--
		39,700 (15%)	29,600 (52%)	25,500 ac (57%)

County-wide Analysis

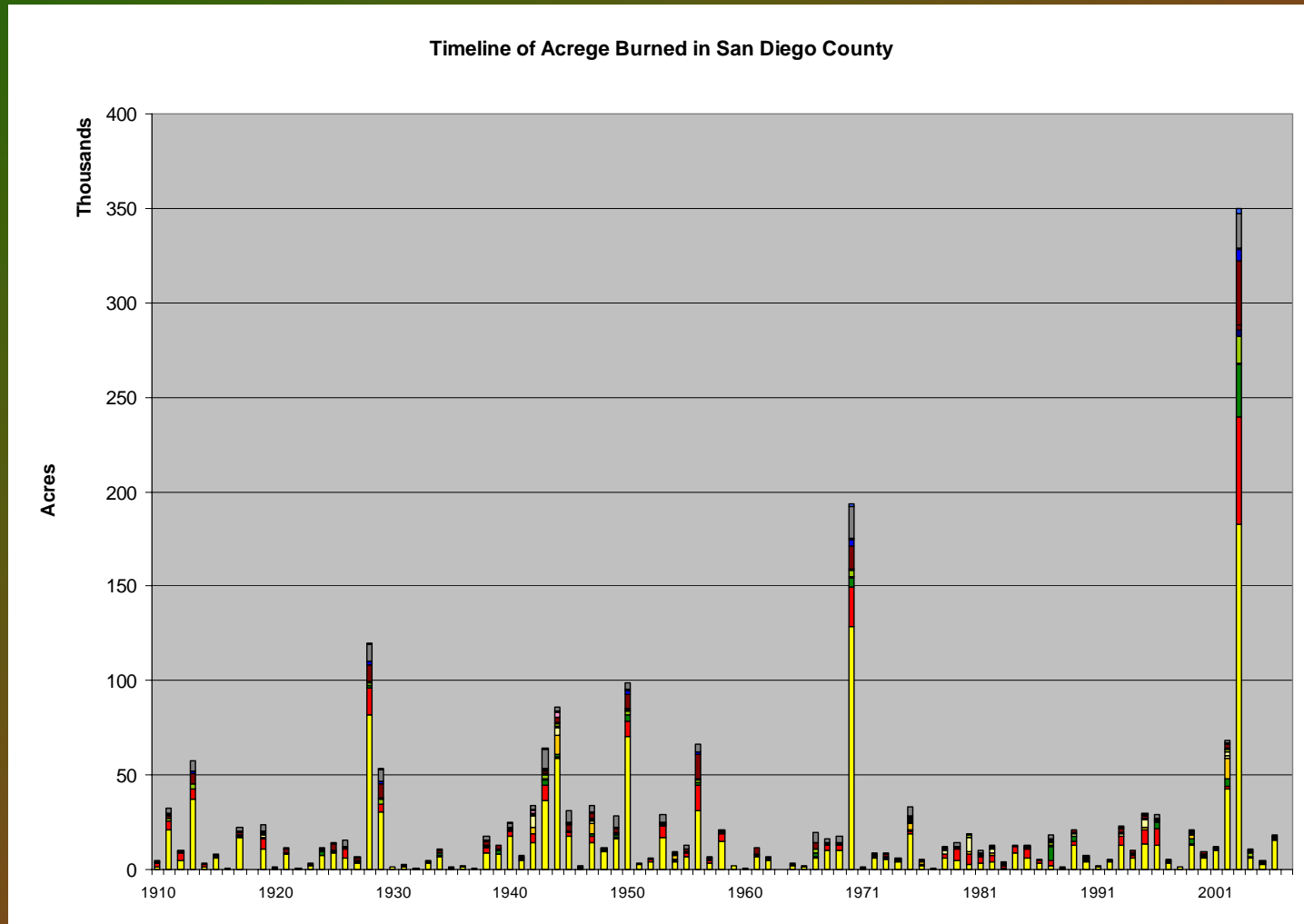
- GIS Data Used for Analysis:
 - CALFIRE Records
 - Perimeters, not burn scars
 - Spatial inaccuracies
 - Not all fires recorded
 - Burn intensities vary
 - Aggregated regional vegetation (1995 + updates)
 - Relatively static
 - Contains errors, but fairly accurate regionally

What is a typical?

- Each year
 - 40,521 +/- 6347 acres
 - 11.4 +/- 1.0 fires
 - June to November
- Each fire (incident)
 - Mean 2,108 +/- 499 ac
 - Median 215 ac

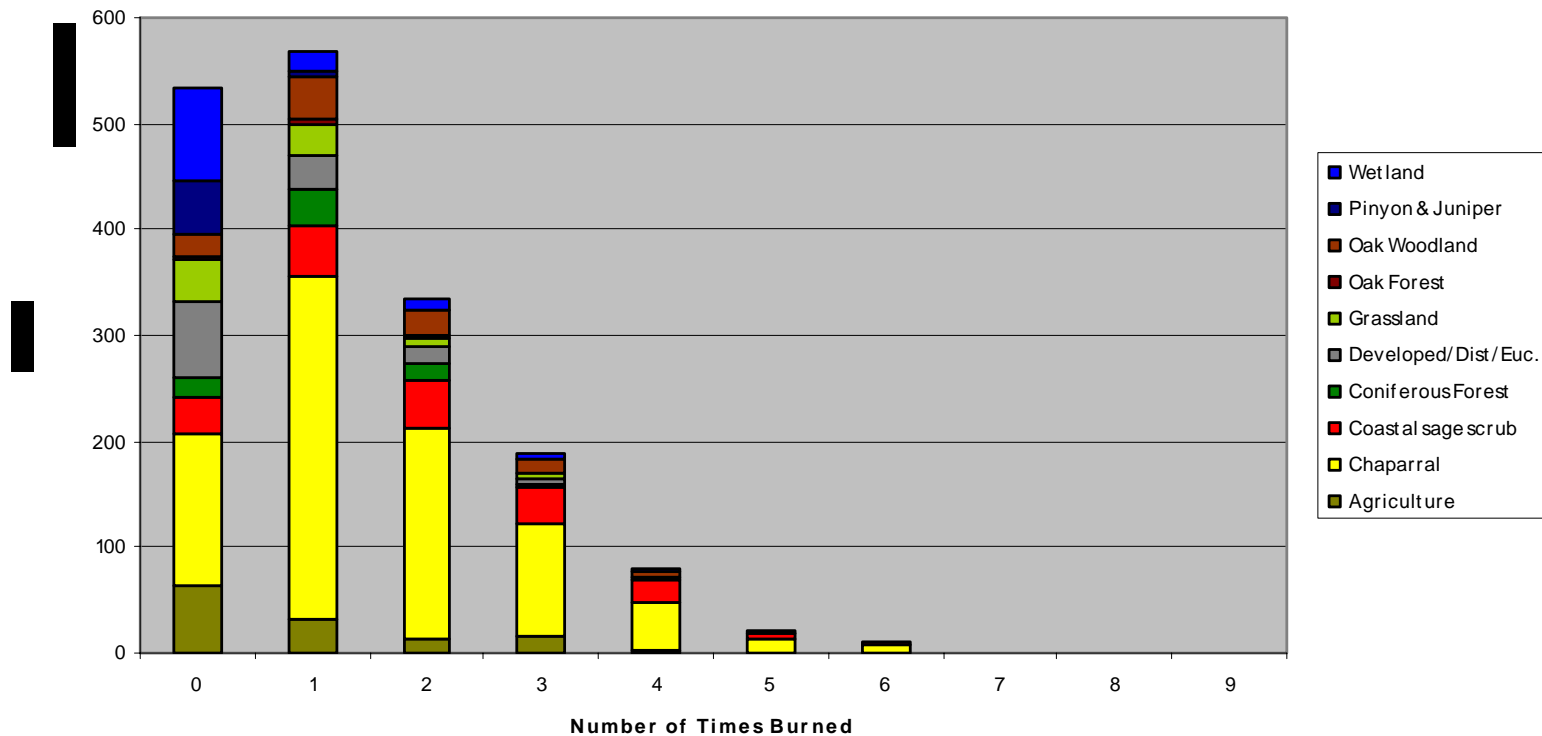


How many acres burn annually?

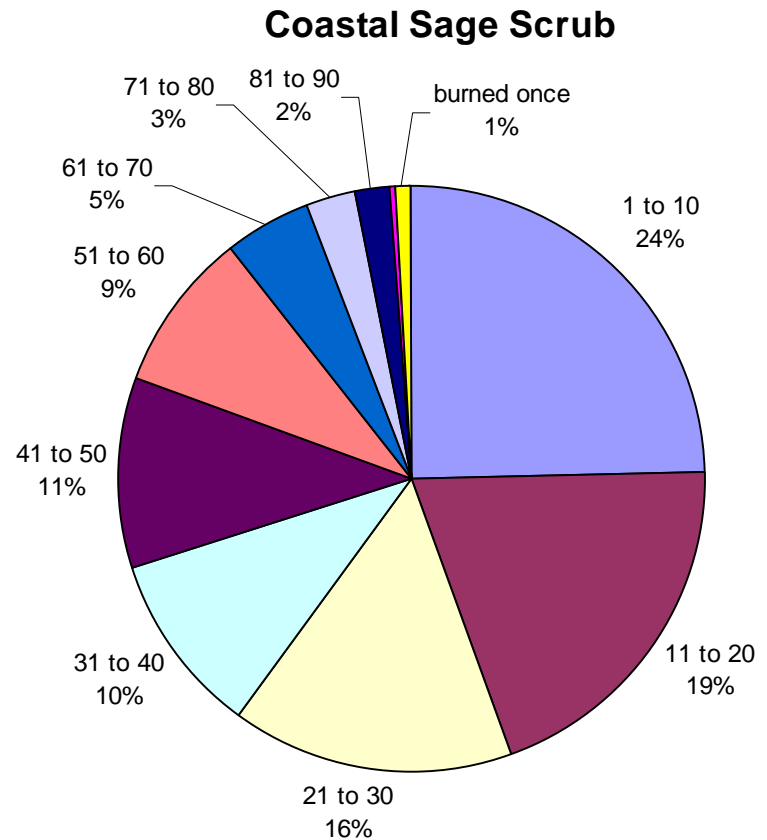
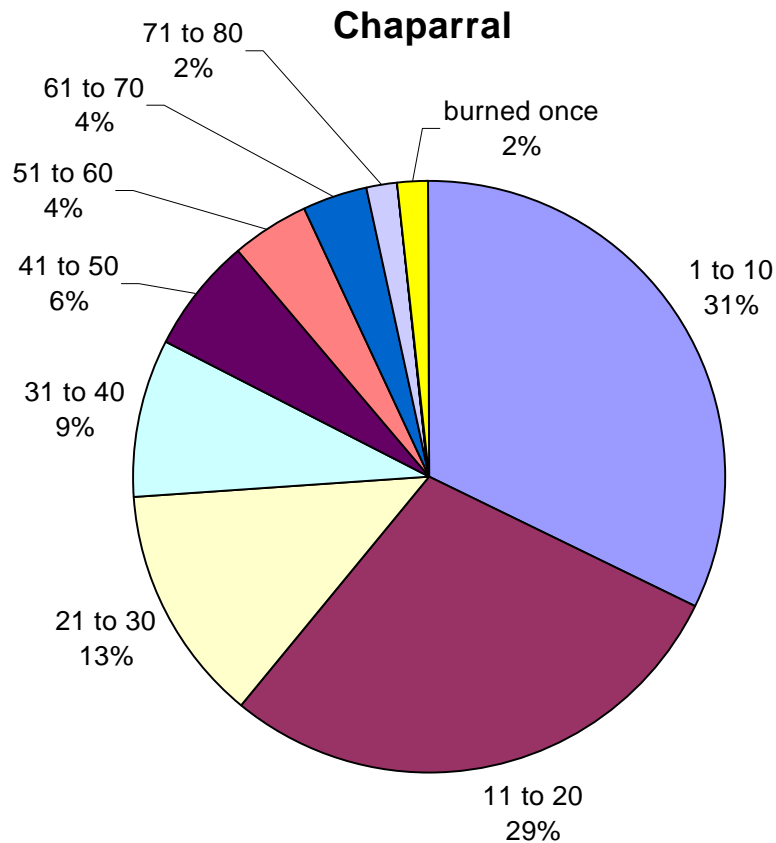


How many times have natural communities burned?

Frequency of Burns by Vegetation Type

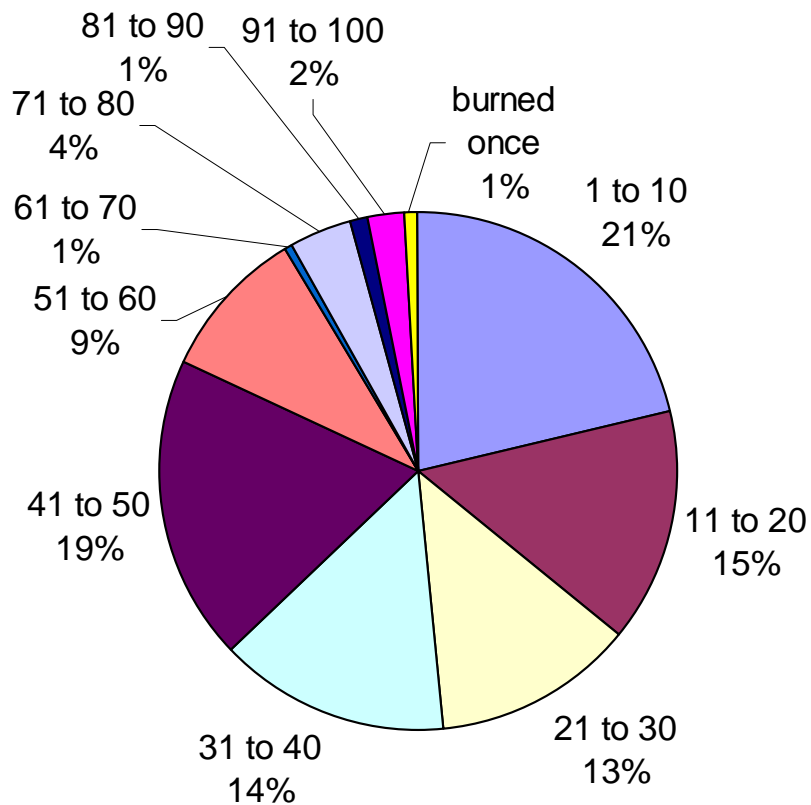


Fire return interval (cont.)

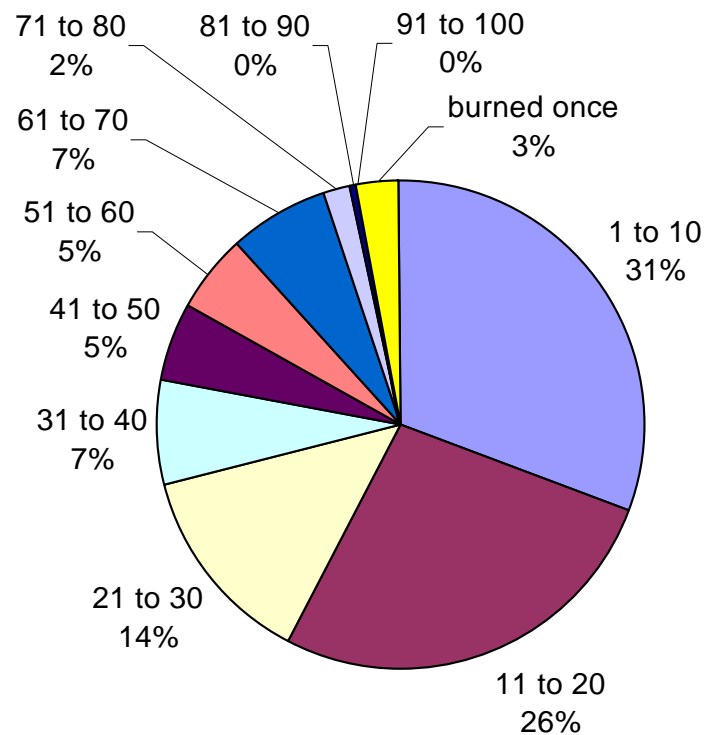


Fire return interval (cont.)

Conifer Forests



Grasslands



What is the current age of vegetation?

Age Class by Vegetation Type

